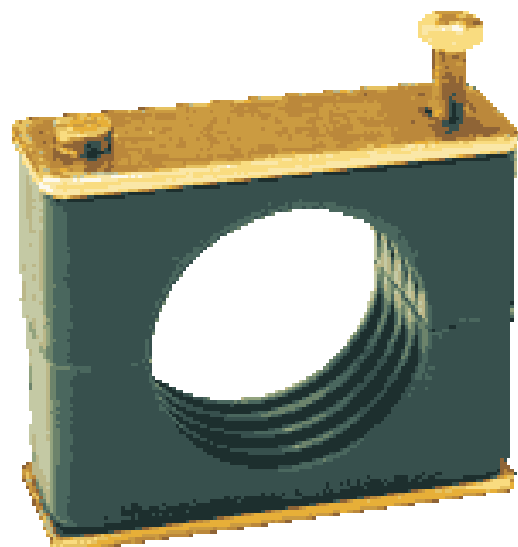
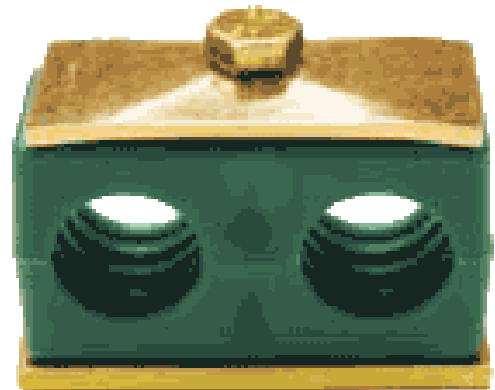
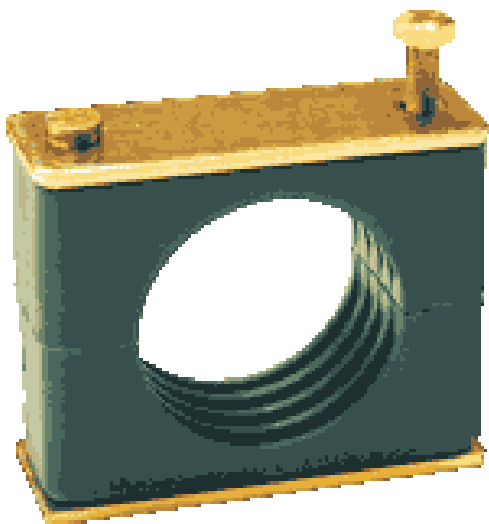


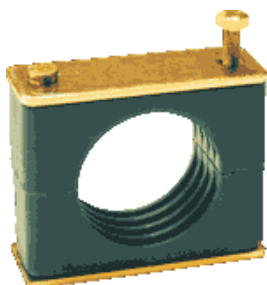
# ABRAZADERAS INSTRUMENTACION

SERIE LIGERA/SERIE PESADA/SERIE DOBLE



# SERIE L: ABRAZADERAS SERIE LIGERA

## FORMA A



### COMPONENTES

Medias abrazaderas	2
Placa superior	1
Placa inferior (para soldar)	1
Tornillos DIN 933	2

## FORMA B



### COMPONENTES

Maedias abrazaderas	2
Placa inferior (para soldar)	1
Tornillos DIN 912	2

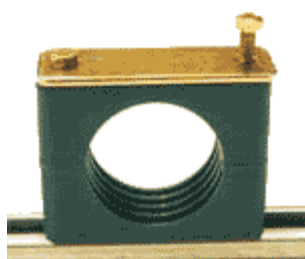
## FORMA C



### COMPONENTES

Medias abrazaderas	2
Placa inferior (para soldar)	1
Tornillos DIN 84	2

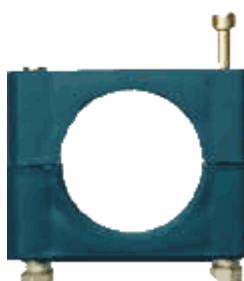
## FORMA D



### COMPONENTES

Medias abrazaderas	2
Placa superior	1
Tornillos DIN 933	2
Tuercas de carril	2

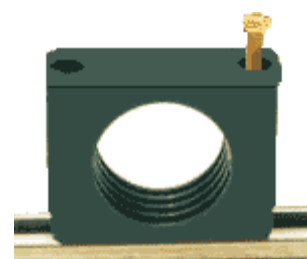
## FORMA E



### COMPONENTES

Medias abrazaderas	2
Screws DIN 912	2
Tuercas de carril	2

## FORMA F



### COMPONENTES

Medias abrazaderas	2
Tornillos DIN 84	2
Tuercas de carril	2

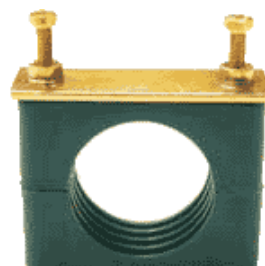
## FORMA G



### COMPONENTES

Medias abrazaderas	2
Placa superior	2
Tornillos DIN 84	1

## FORMA H



### COMPONENTES

Medias abrazaderas	2
Tornillos de superposición	2
Seguro de giro	1

## SUPERPOSICION



	SERIE LIGERA	SERIE PESADA	SERIE DOBLE
	Diámetros exterior tubo	Diámetros exterior tubo	Diámetros exterior tubo
<b>GRUPO 1</b>	6, 6'4, 8, 10, 12	6, 8, 10, 12, 13'5, 14, 16'7, 18	6, 8, 10, 11
<b>GRUPO 2</b>	12'7, 13,5, 14, 15, 16, 17'2, 18	20, 21'3, 22, 25, 26'9, 28, 30	12'7, 14, 15, 16, 18
<b>GRUPO 3</b>	19, 20, 21'3, 22, 25	30, 33'7, 35, 38, 42'4	19, 20, 21'3, 22, 25
<b>GRUPO 4</b>	26'9, 28, 30	38, 42'4, 48'3, 50, 55, 60, 65, 70	26'9, 28, 30
<b>GRUPO 5</b>	32, 33'7, 35, 38, 40, 42	70, 75, 76'1, 80, 88'9	32, 33'7, 35, 38, 42
<b>GRUPO 6</b>	44'5, 48'3, 50'8	101'6, 106, 114'3	

