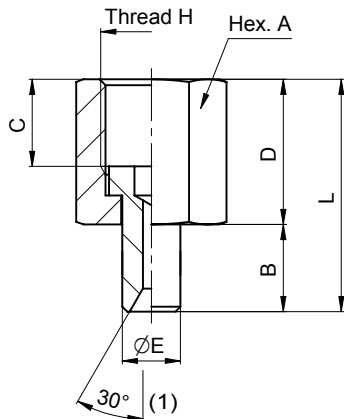
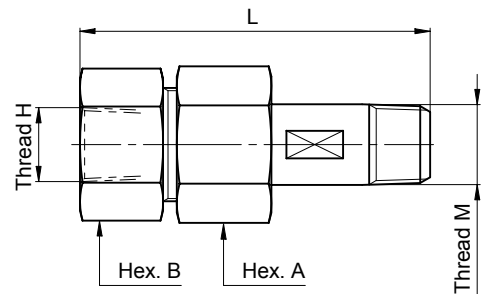
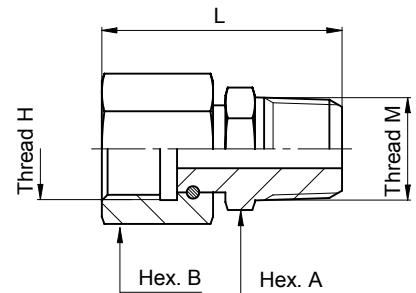


ADAPTER MALE x FEMALE

REFERENCE		THREAD M1	THREAD H1	THREAD M2	HEX.	L
S. STEEL	C. STEEL					
5F-21705/1	5F-21705/2	M.12x1.5	1/4"ISO 228		17	34
5F-21704/1	5F-21704/2	1/4"ISO 228	M.12x1.5		17	34
5F-25453/1	5F-25453/2	1/2"ISO 228	1/4"ISO 228		27	41
5F-21707/1	5F-21707/2	M.20x1.5	1/2"ISO 228		27	50
5F-21706/1	5F-21706/2	1/2"ISO 228	M.20x1.5		27	50
5142044/1	5142044/2	1/2"ISO 228	1/2"ISO 228		27	50
5S-26214/1	5S-26214/2		1/2"ISO 228	1/4"NPT	27	39
5F-25519/1	5F-25519/2		1/2"ISO 228	1/2"NPT	27	43

ADAPTER MALE x LOOSE NUT

REFERENCE		THREAD M	THREAD H	HEX. A	HEX. B	L
S. STEEL	C. STEEL					
5S-12819A/1	5S-12819A/2	1/8"NPT	1/8"ISO 228	11	13	29
5S-12819B/1	5S-12819B/2	1/8"ISO 7R	1/8"ISO 228	11	13	29
1500401	1500402	1/4"NPT	1/4"ISO 228	14	17	38.7
3335301	3335302	1/4"ISO 7R	1/4"ISO 228	14	17	38.7
5F-21994A/1	5F-21994A/2	1/4"NPT	1/2"ISO 228	19	27	46.4
5F-21994B/1	5F-21994B/2	1/4"ISO 7R	1/2"ISO 228	19	27	46.4
5S-21815A/1	5S-21815A/2	3/8"NPT	3/8"ISO 228	18	24	48.3
5S-21815B/1	5S-21815B/2	3/8"ISO 7R	3/8"ISO 228	18	24	48.3
5S-15306A/1	5S-15306A/2	1/2"NPT	3/8"ISO 228	22	27	52.9
5S-15306B/1	5S-15306B/2	1/2"ISO 7R	3/8"ISO 228	22	27	52.9
1181201	1181202	1/2"NPT	1/2"ISO 228	22	27	49
3308201	3308202	1/2"ISO 7R	1/2"ISO 228	22	27	49
3848201	3848202	1/2"NPT	1/2"NPT	36	35	92.6



ADAPTER NOZZLE x LOOSE NUT

REFERENCE		THREAD H	HEX. A	B	C	D	ØE	L
S. STEEL	C. STEEL							
G1/2 DIN 16284/1	G1/2 DIN 16284/2	1/2"ISO 228	27	18	18	30	12	48
M.20x1.5 DIN 16284/1	M.20x1.5 DIN 16284/2	M.20x1.5	27	18	18	30	12	48
G3/8-1	G3/8-2	3/8"ISO 228	22	18	15	27	9	45
G1/4 DIN 16284/1	G1/4 DIN 16284/1	1/4"ISO 228	17	19	11	22	6	41
M.12x1.5 DIN 16284/1	M.12x1.5 DIN 16284/2	M.12x1.5	27	19	11	22	6	41

Note.-
1) Only in 1/2" and M.20x1.5

Connections: NPT (ANSI/ASME B1.20.1), ISO 7R and ISO 228

CAT.	5	18-11-2014	Mx1/2" NPT loose nut fitting is added		
	0	22-02-2001	Published		
	Rev.	Date	Description	Prepared	Checked